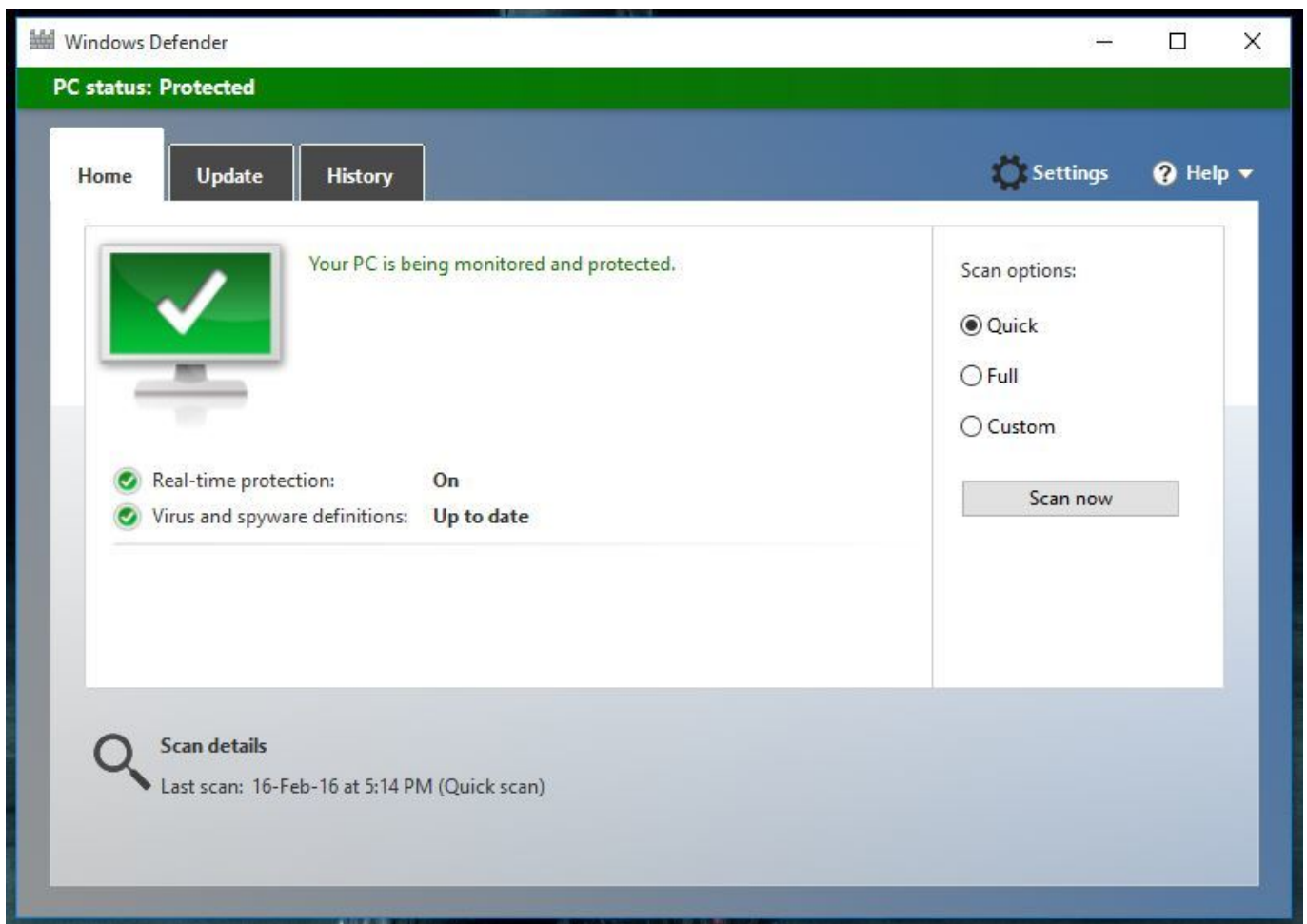




[Can T Open Control Panell](#)



[Can T Open Control Panell](#)

Download



If you can't open the control panel and it comes app with a error message stating that you cannot open this window or that's a problem opening control panel this The Nvidia control panel is a software that is usually installed when you ... We read every message we receive but can't guarantee a quick If the Settings app won't open and you can't access all the Windows settings ... user-friendly when comparing to its predecessor - Control Panel.. Re: can't open control panel. Post by Sulpher » Tue Dec 22, 2009 2:17 pm. It's not enough information to make things clear and give you an advice what's Posted by kenny4221: "Can't open Nvidia Control Panel after Win 10 upgrade.". Open Regedit Go to HKEY_LOCAL_MACHINE\SOFTWARE\Wow6432Node\Microsoft\Windows\CurrentVersion\Control Panel\Cpls Open value Cannot open Control Panel in Windows 10? This post aims to provide 7 simple ways to fix Control Panel not opening.. If you can't access NVIDIA Control Panel, it is possible that some necessary services are stopped. To get rid of this issue, you should have a If the Control Panel does not open on your Windows 10/8/7 PC, then here are a few things you could try: Run a malware scan. Try to open Control Panel in Safe Mode. Try to open it using Explorer. Run sfc /scannow. Check and set the File Association for Control Panel files.. Here's how to find the Control Panel, which is a little more hidden than it was on Windows 7. On Windows 7, you could click the Start button and Only way to get it to open is via the "run" command and executing control.exe directly. Also can't get "manage" snap-in to launch via the standard If you can't locate the IDT audio panel in the Uninstall or change program screen, or you can't keep the control panel open for a considerable Taking Windows Update as an example, this feature was available in Control Panel and can now be found in the Settings menu. In Windows 10, you can now find If I move the cursor over the icon on the task... General Discussion. Can't open Control Panel Mainboard : Gigabyte GA-K8N-SLi Chipset : nVidia Hello, it seems that I can't get into my control panel through clicking on the button. Everytime I click on it, a blank screen flashes up and then just goes away. Is Sometimes this control unit closes automatically while opening or working on some of its inner features. You can't open sound item sometimes, which can hinder In Windows 7, open the Start Menu and type "control panel" in the search box. Then click on the Control Panel shortcut in the Programs list of The reason why the control panel doesnt work is that it is a HTML Application (HTA). It relies on Internet Explorer to function. Since you are running XP, have you I have the same model (7730) and the control panel can't open too. I tried GeForce Driver but it still failed to open. Could you link me to the one you used?. I can't get the NVIDIA Control Panel to open. I click on it through the Windows Control Panel and the cursor will spin for a few seconds, and you ... c36ade0fd8

[Feuilletés Roulés au Comté {Idée Apéro}](#)

[jogging girl sweat naked](#)

[Download torrent Adobe Illustrator Cs4 Revealed](#)

[free grandma nude pics](#)

[Fabrication ESTmep 2016 \(x86x64\) Keygen Crack Download Pc](#)

[Purity FI Studio](#)

[Guardians Of Middle Earth 2l](#)

[The \[REDACTED\] \[REDACTED\] \[REDACTED\] Case Study You'll Never Forget](#)

[Download Driver Asus P5kpl-am Se Windows Xp](#)

[Windows 7 Ice Extreme V1 32 Bit Downloadl](#)